



VIA Labs, Inc.

VLI VL100MPTool User Guide

Version 1.1
Nov. 10, 2016

Table of Contents

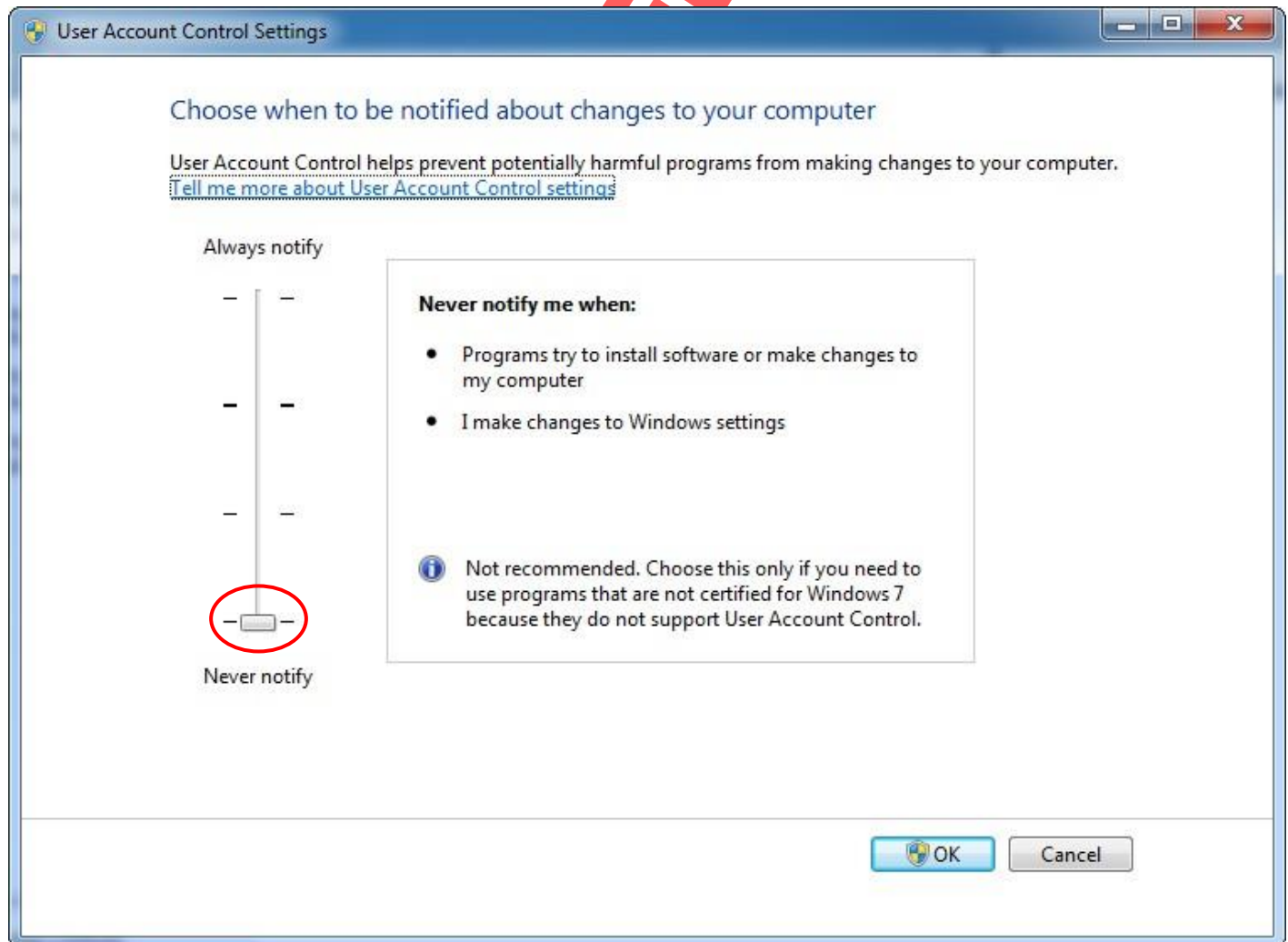
1.	Installation Overview	2
2.	Use VL100 MPTool	6
2.1.	VL100 MPTool Main Window	6
2.1.1.	Setting – Basic Setting.....	8
2.1.2.	Enumerate.....	8
2.1.3.	Detail View.....	8
2.1.4.	Auto Run and Auto Stop	9
2.2.	View.....	10
2.3.	Help	10
3.	Uninstall	11

VLI CONFIDENTIAL



1. Installation Overview

- **Upstream Port Limitation Description:**
 - (1) Type-C Host must Not support Alternate Mode
 - (2) Or Billboard Enable when Type-C Host support Alternate Mode
 - (3) Or with VLI VL160 Type-C(female) to Type-A(male)
 - (4) Or with VLI VL222 Type-C(female) to Type-A(male)
- **VL100MPTool Currently only supports Windows operating system.**
 - (1) Pull the slider down to "Never Notify" in User Account Control Settings when OS is Windows 7 / 8 / 8.1 / 10. (Control Panel > User Accounts > Change User Account Control Settings)

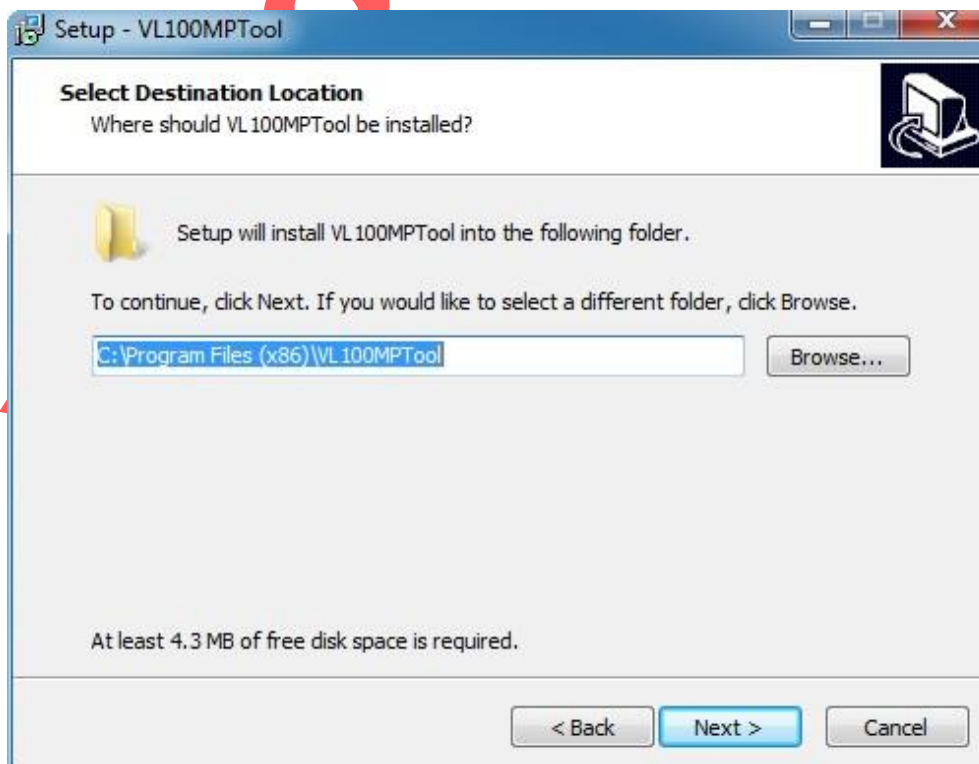


(2) Run VL100MPTool_Setup.exe

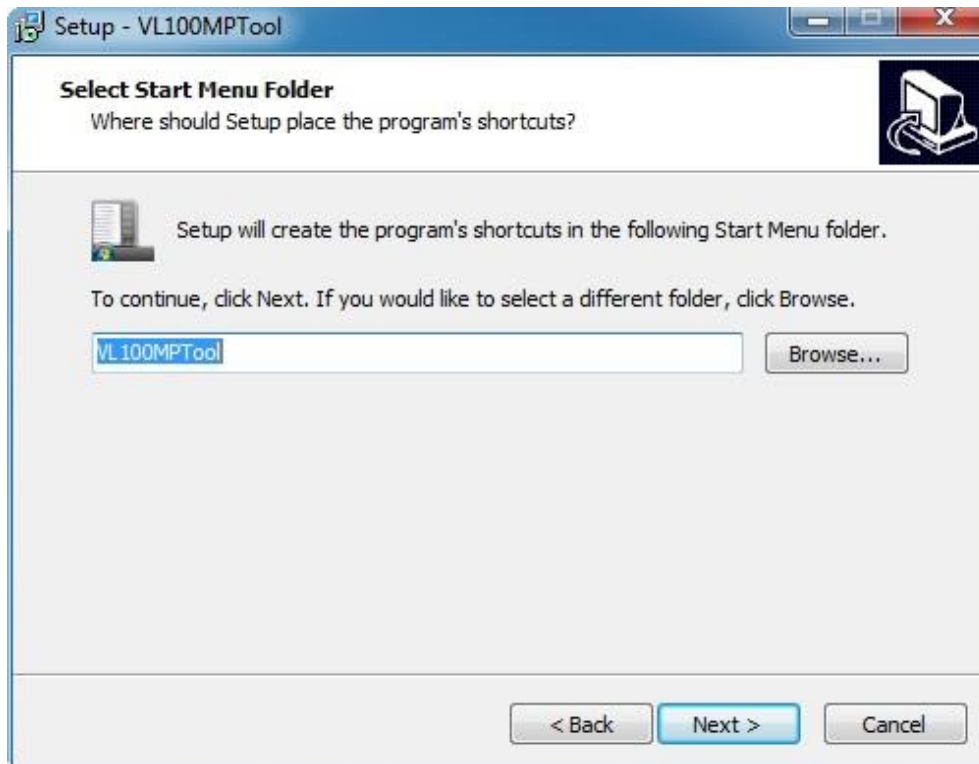
Step1 : Click "Next" for the next step



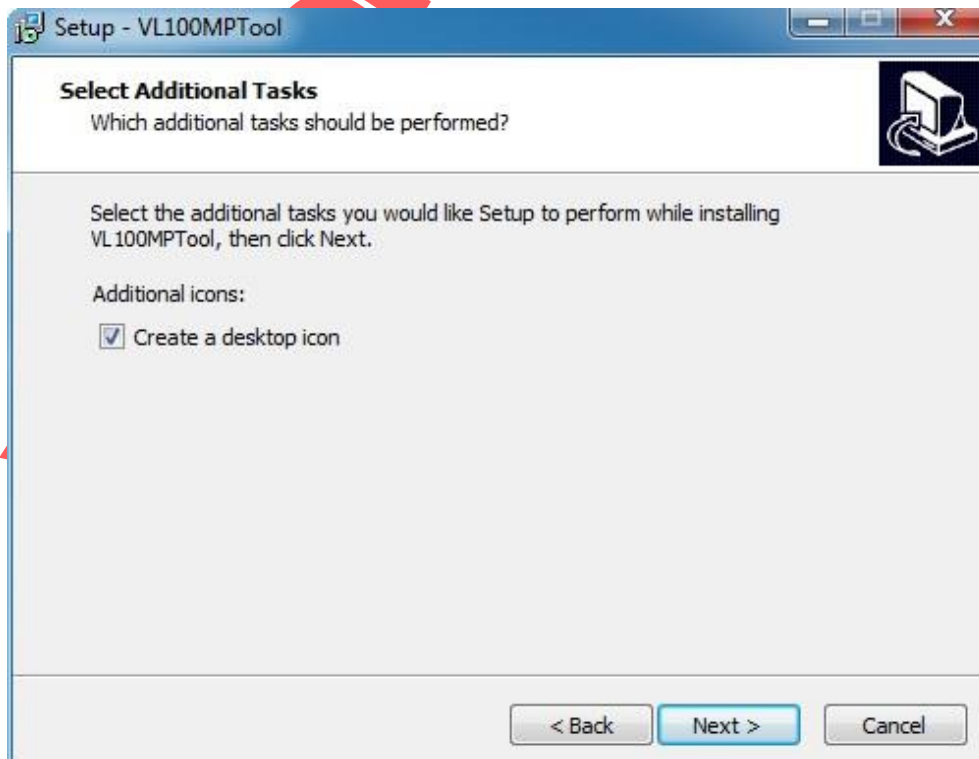
Step2 : Specify the Destination Folder and click "Next"



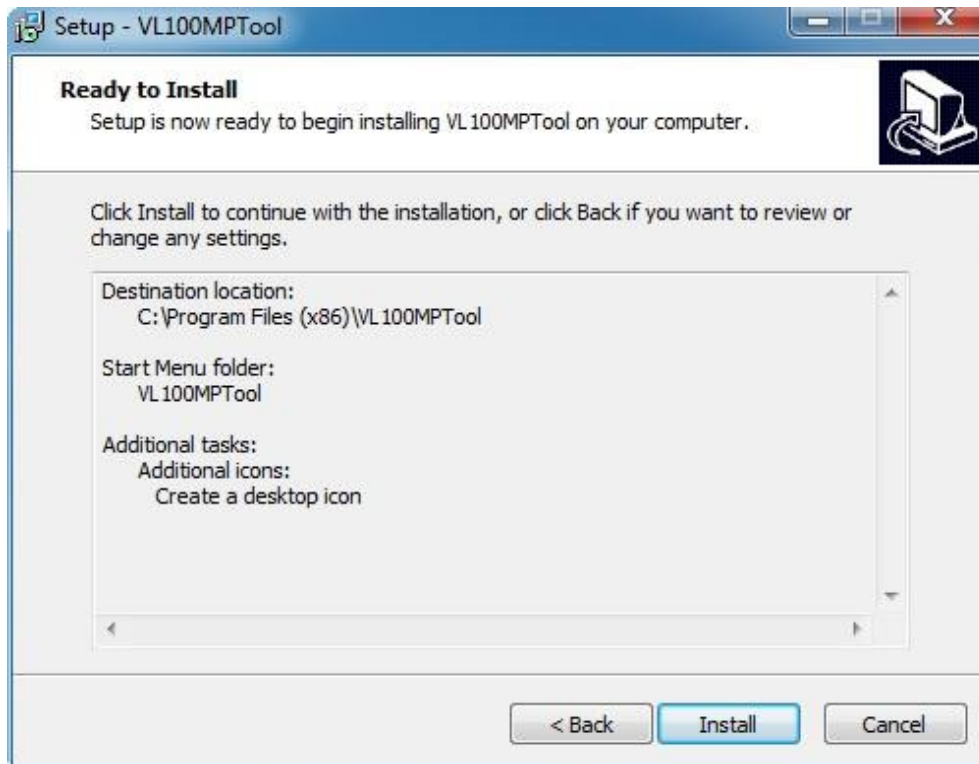
Step3 : Specify the Start Menu Shortcut Location and click “Next”



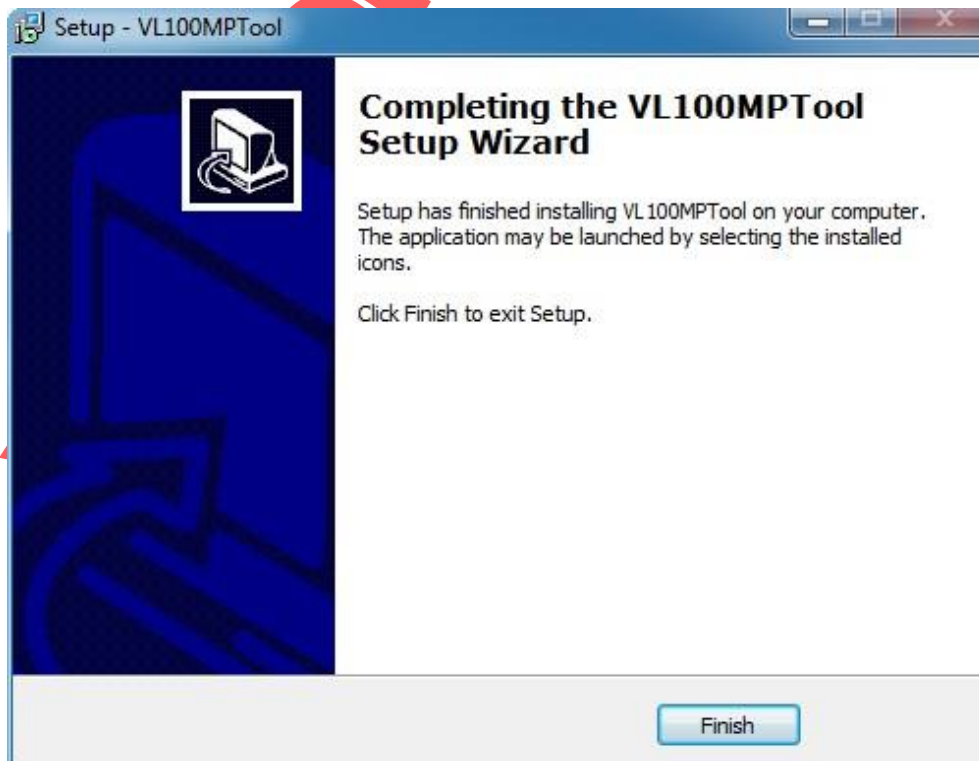
Step4 : (Optional) Select Additional Shortcut Icons to be created and click “Next”



Step5 : Confirm Installation Options and click “Install”



Step6 : Installation Complete! Click “Finish” to exit.

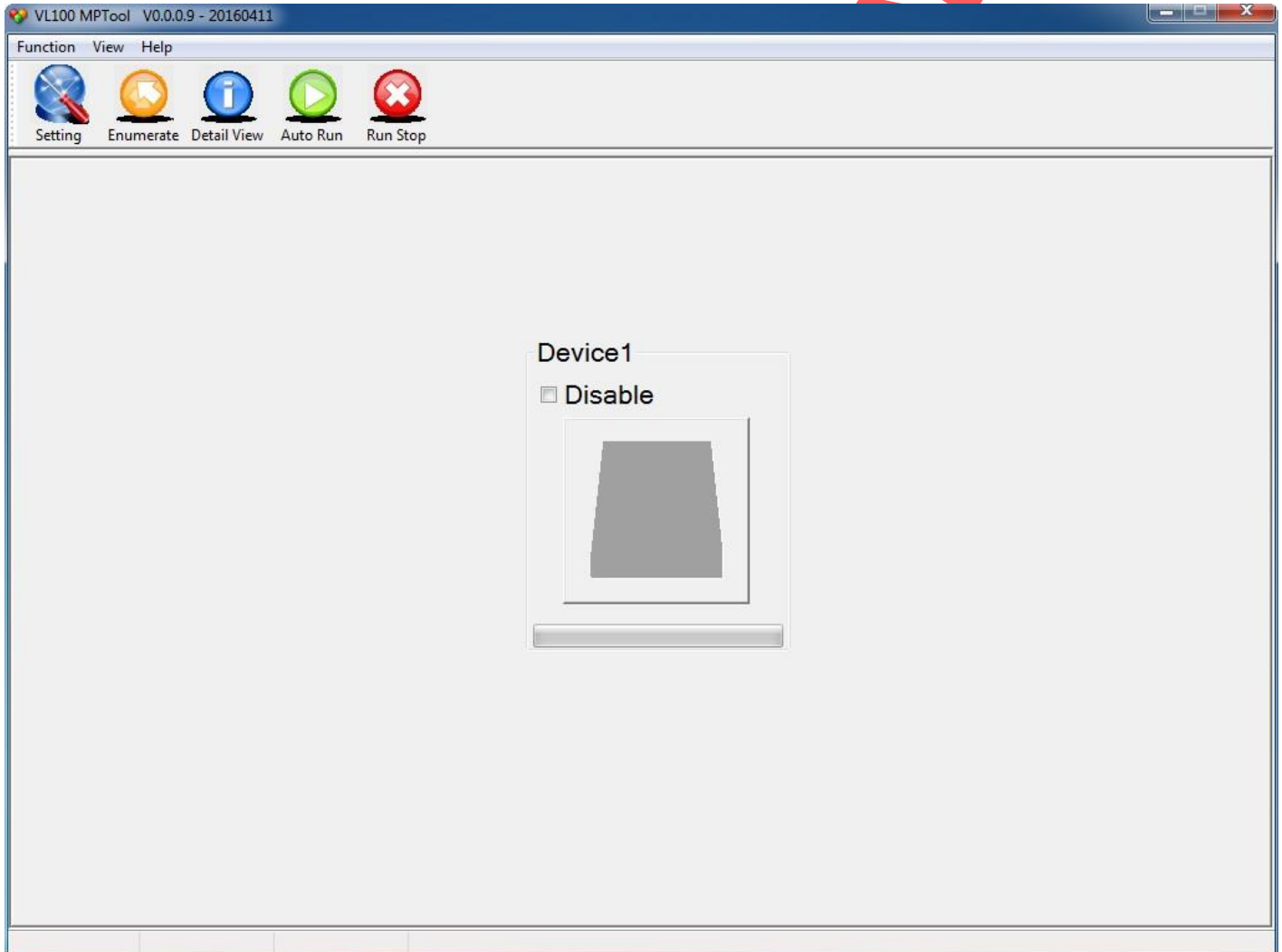




2. Use VL100 MPTool

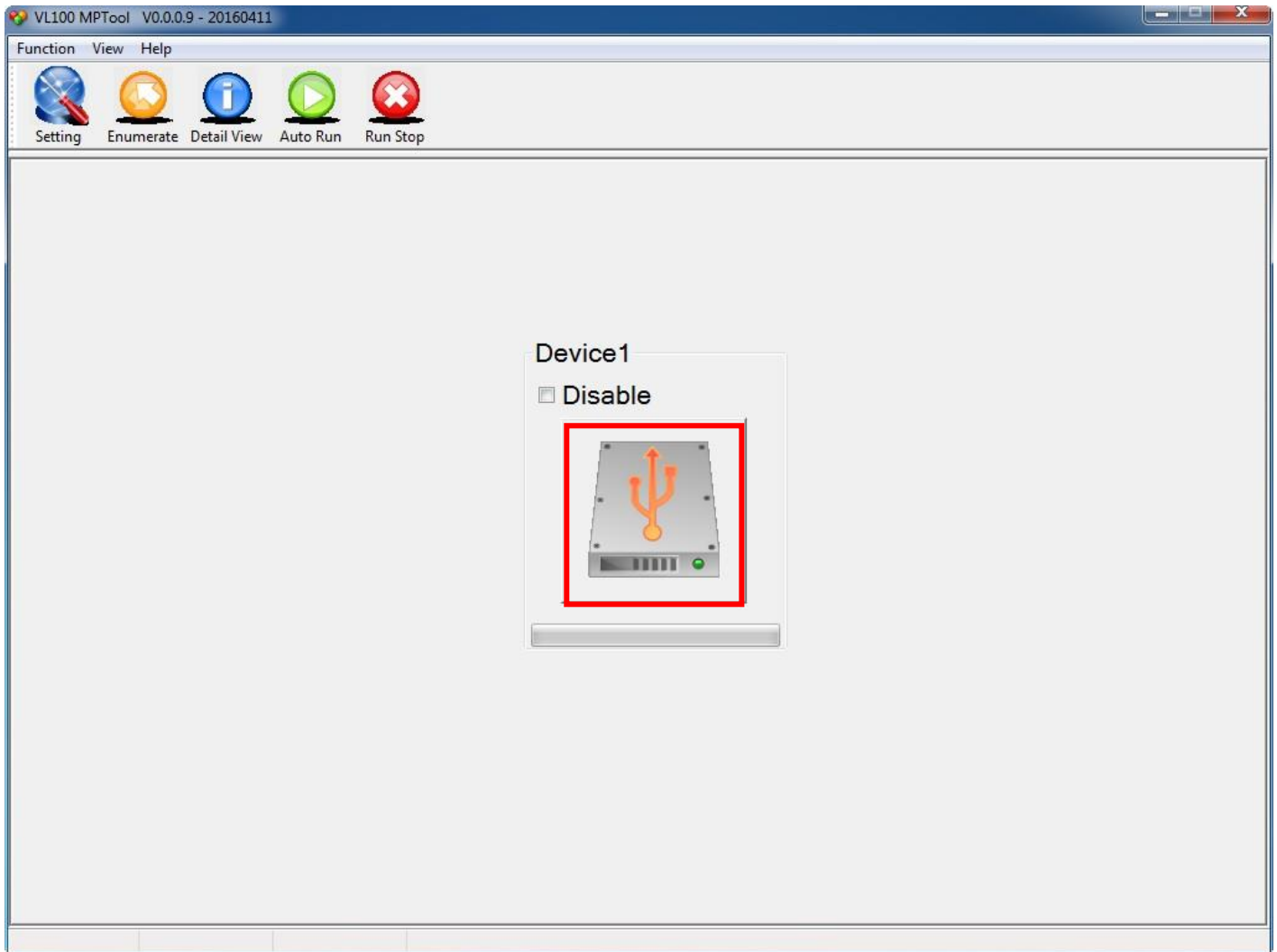
2.1. VL100 MPTool Main Window

(1) Currently available functions: "Setting", "Enumerate", "Detail View", "Auto Run" and "Run Stop".





(2) The icon shows that a device has been plug in.





2.1.1. Setting – Basic Setting

Basic Setting includes “Test Procedure Filter” and “FW File Indicate”.

(1) **Test Procedure Filter:** Flash type Default is MXIC 25L 512E.

(2) **FW File Indicate:** Provide firmware version information, and specify the firmware file. Click “Backup FW” to backup currently used firmware. (Save Setting = OK)

Setting

Basic Setting

Test Procedure Filter

Flash type: Default

FW File Indicate

Current Firmware version: N/A Bin file firmware version: N/A

Open File Save Setting

Backup FW

Log file Indicate

Open File

Mass Storage Setting

InquiryVID: Default

InquiryPID: Default

Password: 0123456789ABCDEF

ISO File Path

USB Descriptor Setting

Product String: VLI Product String

Manufacture String: VLI manufacture String

VID: 0x2109 PID: 0x0100

SN Option

SN Generator: Enable Custom Define SN Generator

Serial Number(Hex): 000000123100

SN Mask: #####

Interval: 1

Length: 12

DecimalSN: ☐

OK

Others

Load SaveAs OK Cancel

2.1.2. Enumerate

Re-detect the devices have been inserted.

2.1.3. Detail View

Show the device information: “VID/PID” and “Firmware Version”.

VL100 MPTool V0.0.0.9 - 20160411

Function View Help

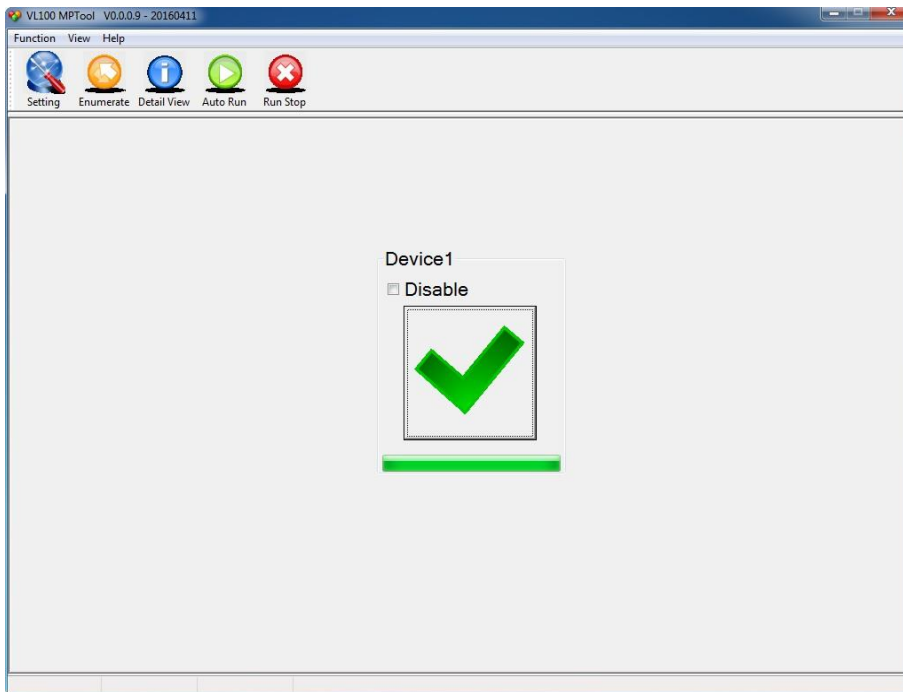
Setting Enumerate Detail View Auto Run Run Stop

DeviceList	Disk	VID/PID	iManufacture	iProduct	Capacity	Inquiry	SerialNur
[Device 01]:	N/A	2109 / 0100			0 MB		

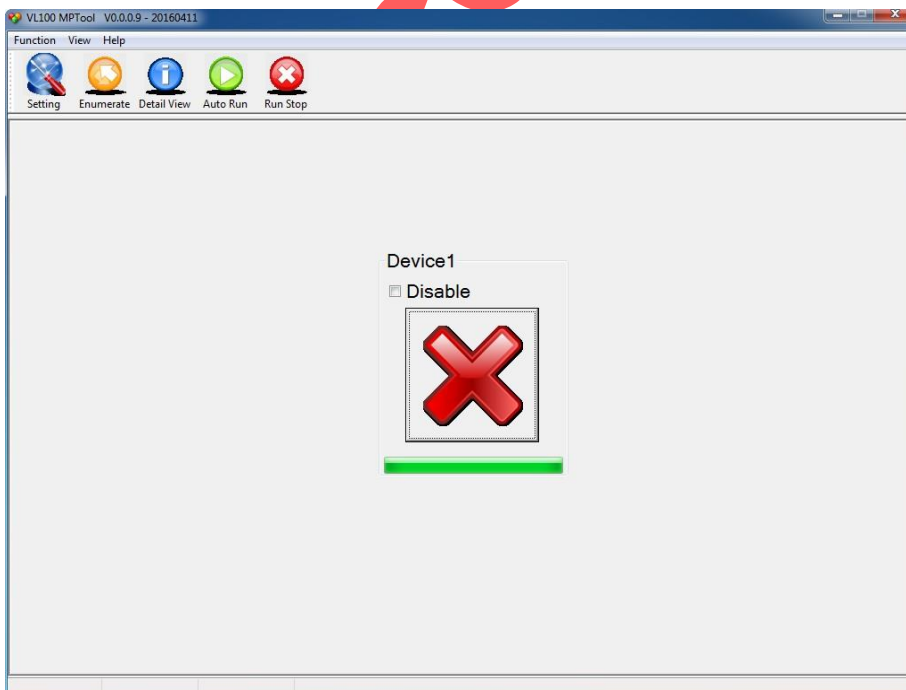
2.1.4. Auto Run and Auto Stop

VL100MPTool will update FW when click “Auto Run” or “Device1 Icon”; Otherwise the FW update will be stopped when click “Run Stop”.

A. Firmware Update Success



B. Firmware Update Fail





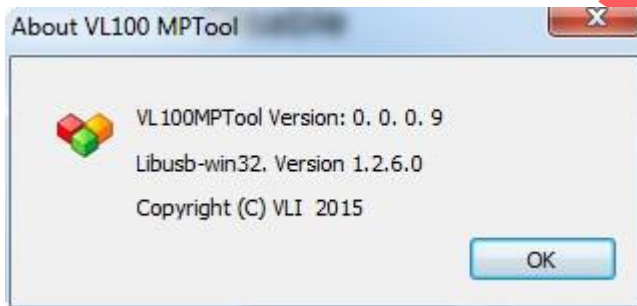
2.2. View

Show “Toolbar”, “Status Bar” and “DeviceNumber” (only select one device).



2.3. Help

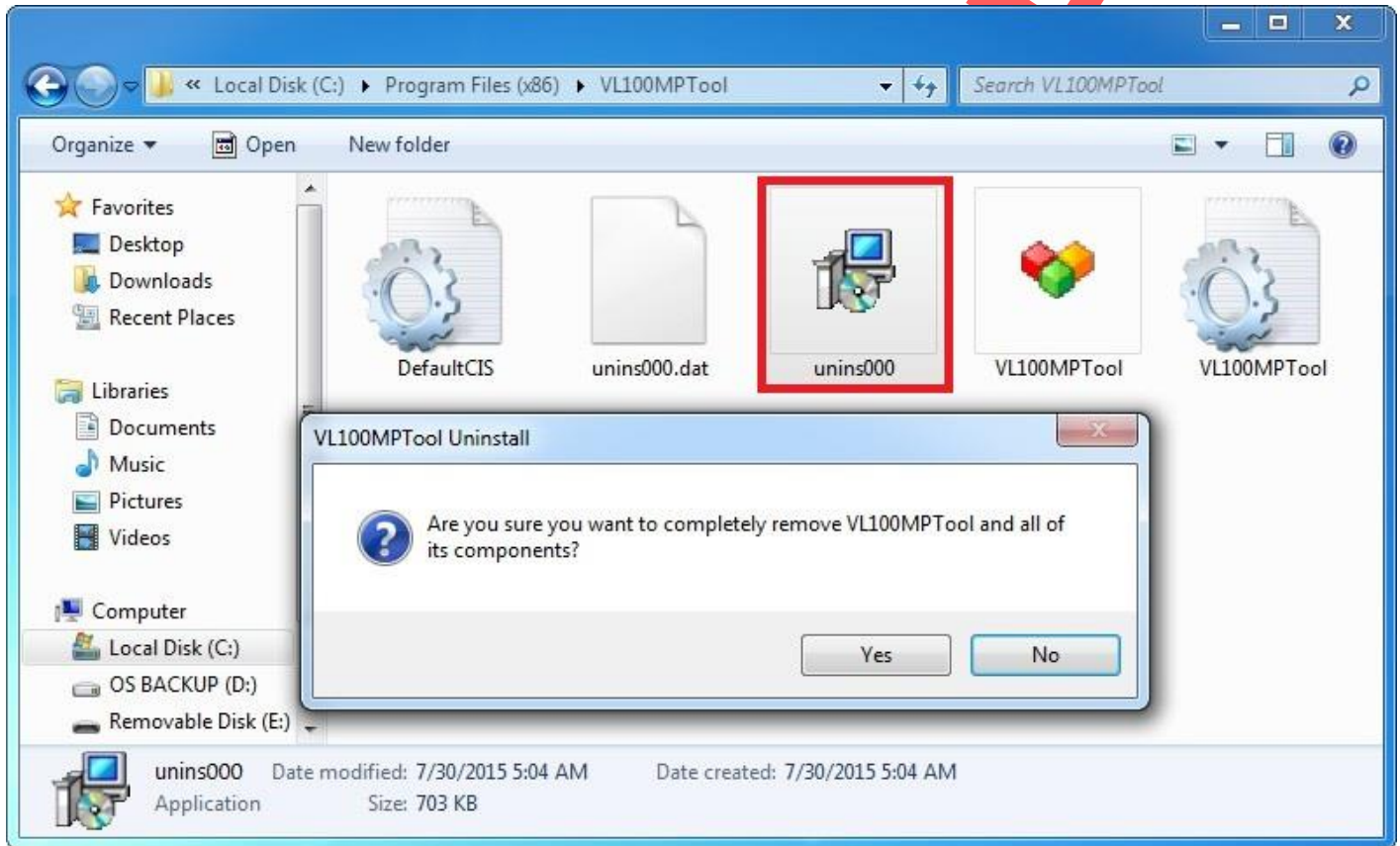
VLI VL100MPTool information will be shown in “Help”.





3. Uninstall

(1) Click “unins000”, and then pop a dialog for uninstall.



(2) VL100MPTool has been successfully uninstalled.

